

CGI SUB ASSEMBLY + 3 ACETYLENE CYLINDERS



DESCRIPTION

This gas supply sub-system with 3 high pressure hoses, Manyflow valve block and extension pipe shall be wall mounted using the provided bracket. The CGI Manyflow system uses a unique, unit-body, 3-gas control that accommodates two or three cylinder inputs, each with a integral check valve.

APPLICATIONS

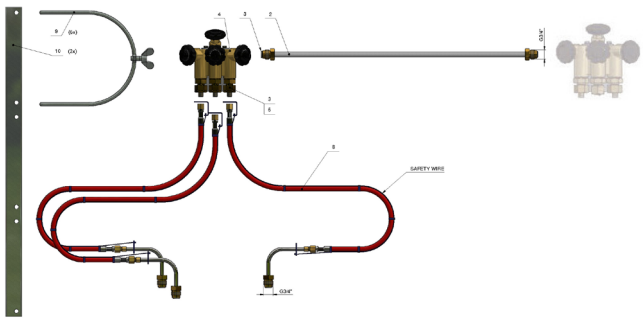
This sub assembly enables the addition of an extension for acetylene CGI gas supply system. The use of non-return valves within the Manyflow valve block prevents unwanted re-filling into connected cylinders and enables constant gas supply. This systems' use of flexible hosing allows easy positioning during cylinder re-connection.

SYSTEM HIGHLIGHTS

- +3 cylinders
- Established marine standards
- High pressure ball shut-off valve acc. to ISO 15615
- High pressure hoses comply to ISO 14113

PARAMETERS FOR SUB ASSEMBLY + 3 ACETYLENE CYLINDERS

Inlet pressure:	max 18 bar
-----------------	------------



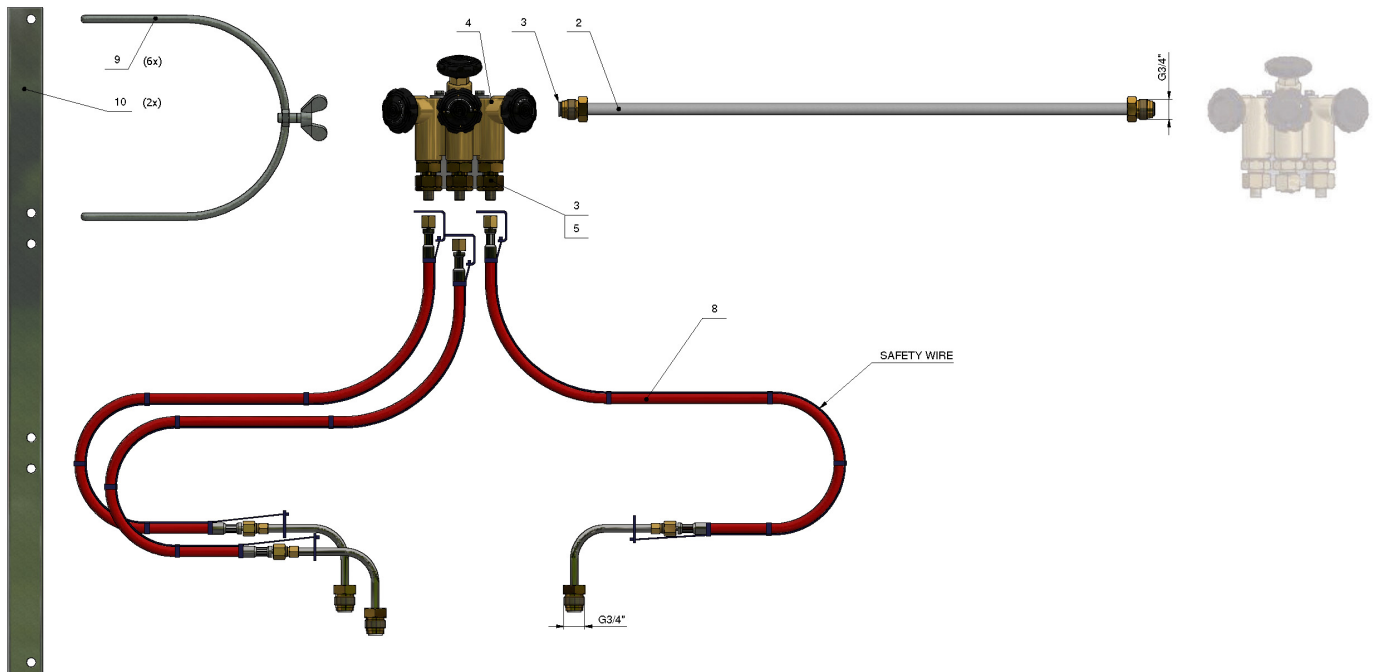
(see enlarged image on back)

TECHNICAL DATA MANYFLOW BLOCK

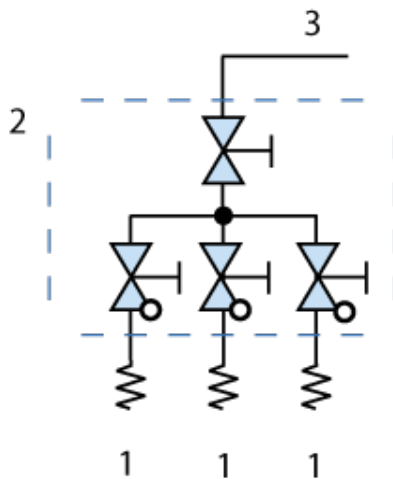
Body material	Brass CuZn40 Pb2 (2.0402)
HP Hand wheel material	impact resistant MARANYL
Non-return valves	3x inlet
Inlet	3x G1/4" lh
Inlet shut-off valves	3x single, 1x central
Inlet filter	3x Sintered metal filter
Outlet	ISO G3/4" rh female
Extension pipe	699 mm G3/4"xG3/4", AISI 316L (stainless steel)
Cylinder clamp	Zinc plated steel
Cylinder bracket	stainless steel
Quality control	EN ISO 15615 facilities for high pressure acetylene



Contact your Drew Marine representative for more information



FLOW SCHEME



ORDERING INFORMATION

Part No.	Component	PCN
	CGI System complete	9082132
1	HP hose acetylene ISO , G3/4"xG1/4" lh	0787012
2	Manyflow valve block	—
3	Manifold pipe 600mm	9083056
	CGI cylinder clamp 6x	0766016
	Cylinder rack assembly for one Cyl	9041013
	Cylinder rack assembly for two Cyl	9042011
	Cylinder rack assembly for three Cyl	9043019



Contact your Drew Marine representative for more information

Drew Marine maintains Safety Data Sheets on all of its products. These documents contain health and safety information for the development of appropriate product handling procedures to protect your employees. Safety Data Sheets should be read and understood by all of your supervisory personnel and employees before using Drew Marine products.



Drew Marine®

**400 Captain Neville Drive
Waterbury, CT 06705 USA
1-973-526-5700
Drew-Marine.com**

Copyright © Drew Marine. All Rights Reserved. All statements, information and data presented herein are believed to be accurate and reliable but are not to be taken as a guarantee, express warranty or implied warranty of merchantability or fitness for a particular purpose, or representation, express or implied, for which seller assumes legal responsibility, and they are offered solely for your consideration, investigation and verification. Statements or suggestions concerning possible use of this product are made without representation or warranty that any such use is free of patent infringement and are not recommendations to infringe on any patent.